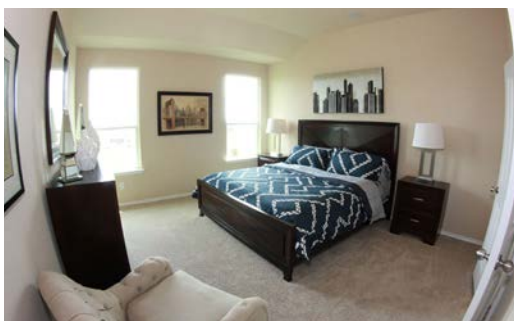


# REMUDA RANCH



CALL CRAIG @ 210-592-7759



Prices, plans, features, options and co-broke are subject to change without notice. Additional restrictions may apply. All square footages are approximate and vary by elevation. Offer valid only for new contracts and does not apply to offers, transfers, cancellations or re-writes. Sales agent MUST be present at time of contract. Additional restrictions apply and offer is subject to change without notice. Addresses chosen by DR Horton® can change at any time. Please contact a community sales representative for additional requirements for the offer.

---

# AMENITIES

---

- Remuda Ranch offers an affordable & restful country living experience, with luxurious open floorplans
- Excellent Northside I.S.D.
- Convenient access to 1604, I10, and HWY 151 as well as all the area attractions Fiesta Texas & The Shops at La Cantera

# Remuda Ranch

## Area Information

### **Utilities**

City Public Service

(210) 353-2222

[www.citypublicservice.com](http://www.citypublicservice.com)

Tiger Sanitation

(210) 333-6287

S.A.W.S

(210) 704-7297

[www.saws.org](http://www.saws.org)

Time Warner Cable

(210) 244-0500

[www.twc-sa.com](http://www.twc-sa.com)

AT&T

[www.att.com](http://www.att.com)

### **Post Office**

U. S. Post Office

6815 Huebner Rd.

Leon Valley, TX 78238

(210) 520-3041

### **Public Schools**

Northside Independent School District

(210) 706-8500

[www.nisd.net](http://www.nisd.net)

Henderson Elementary School

14605 Kallison Bend

(210) 398-1050

DR. John M. Folks

9855 Swayback Ranch

(210) 398-1600

Taft High School

11600 FM 471 W

(210) 397-6000

### **Recreation**

Sea World

Westover Hills Blvd. & 1604

(210) 523-3611

Six Flags Fiesta Texas

I-10 West & 1604

(210) 697-5050

San Antonio Zoo

3903 N. St. Mary's Street

(210) 734-7183

Hyatt Hill Country Resort & Golf Club

9800 Hyatt Resort Drive

(210) 647-1234

Racquetball & Fitness Club

1604 & Bandera

(210) 523-1223

### **Shopping & Restaurants**

- Wal-Mart - 1604 & Culebra
- Culebra Market - 1604 & Culebra
  - Various shopping and grocery
- Bill Miller BBQ - Culebra & Westwood Loop
- Bandera Point – 1604 & Bandera
  - Various shopping and grocery
- The Shops at La Cantera – 1604 & La Cantera Pkwy

### **Taxing Jurisdiction (2014)**

Bexar Co Rd & Flood	0.030679
SA River Auth	0.017500
Alamo Com College	0.149150
Univ Health System	0.276235
Bexar County	0.283821
Northside ISD	1.375500
Bexar Co Emerg Dist #7	<u>0.099510</u>

**TOTAL 2.232395**

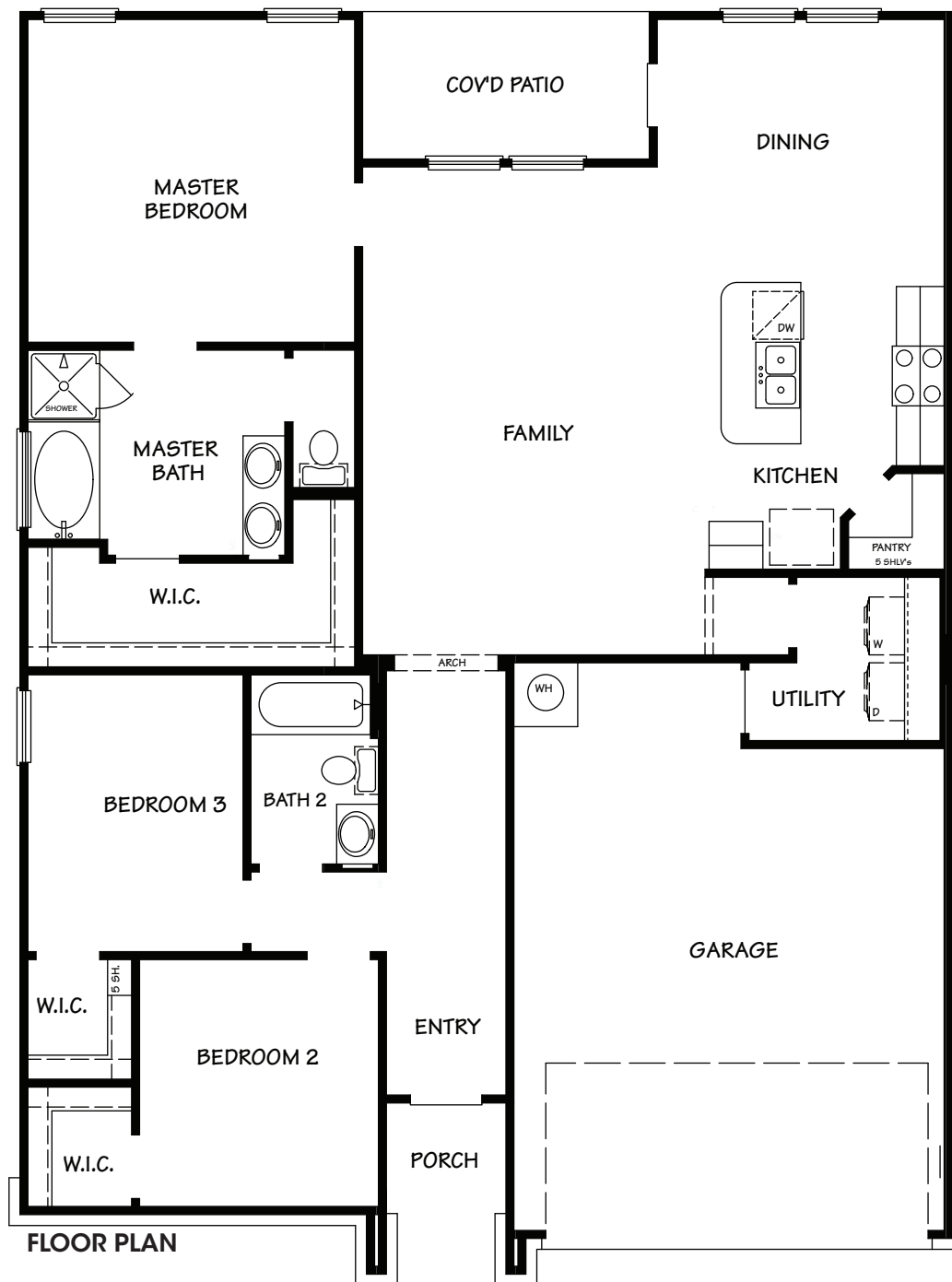
\* Per Hundred \$ Value



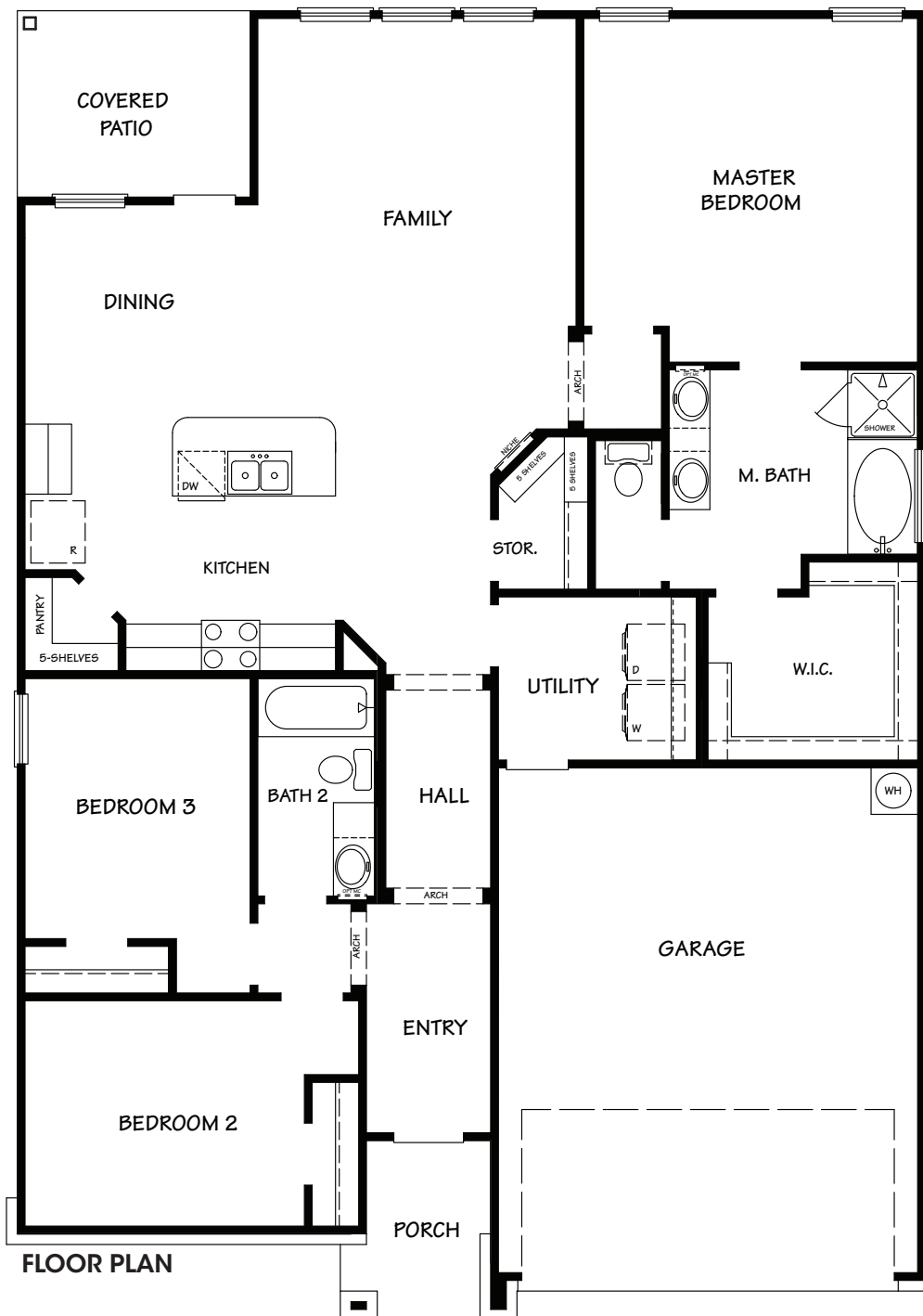
B.

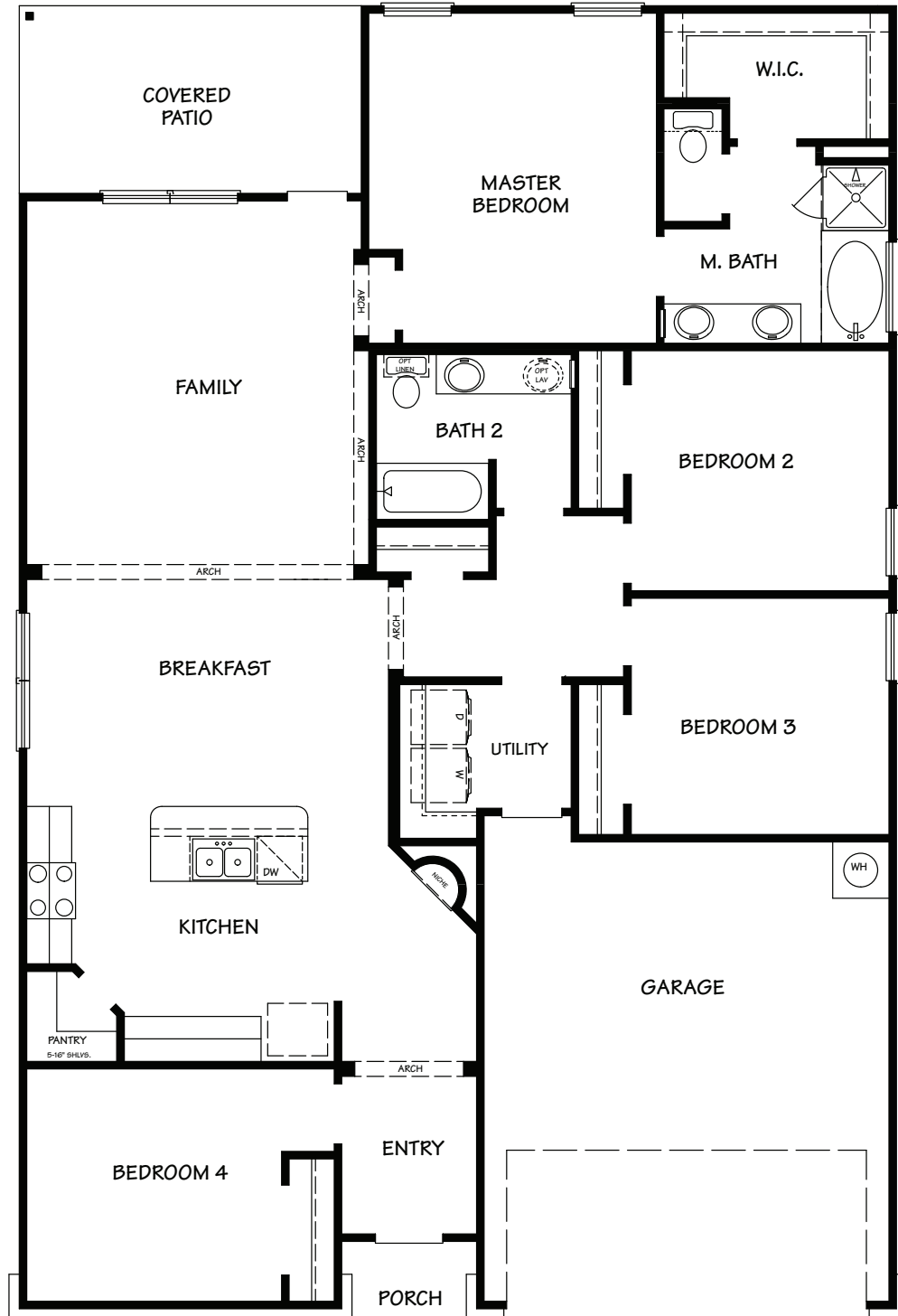


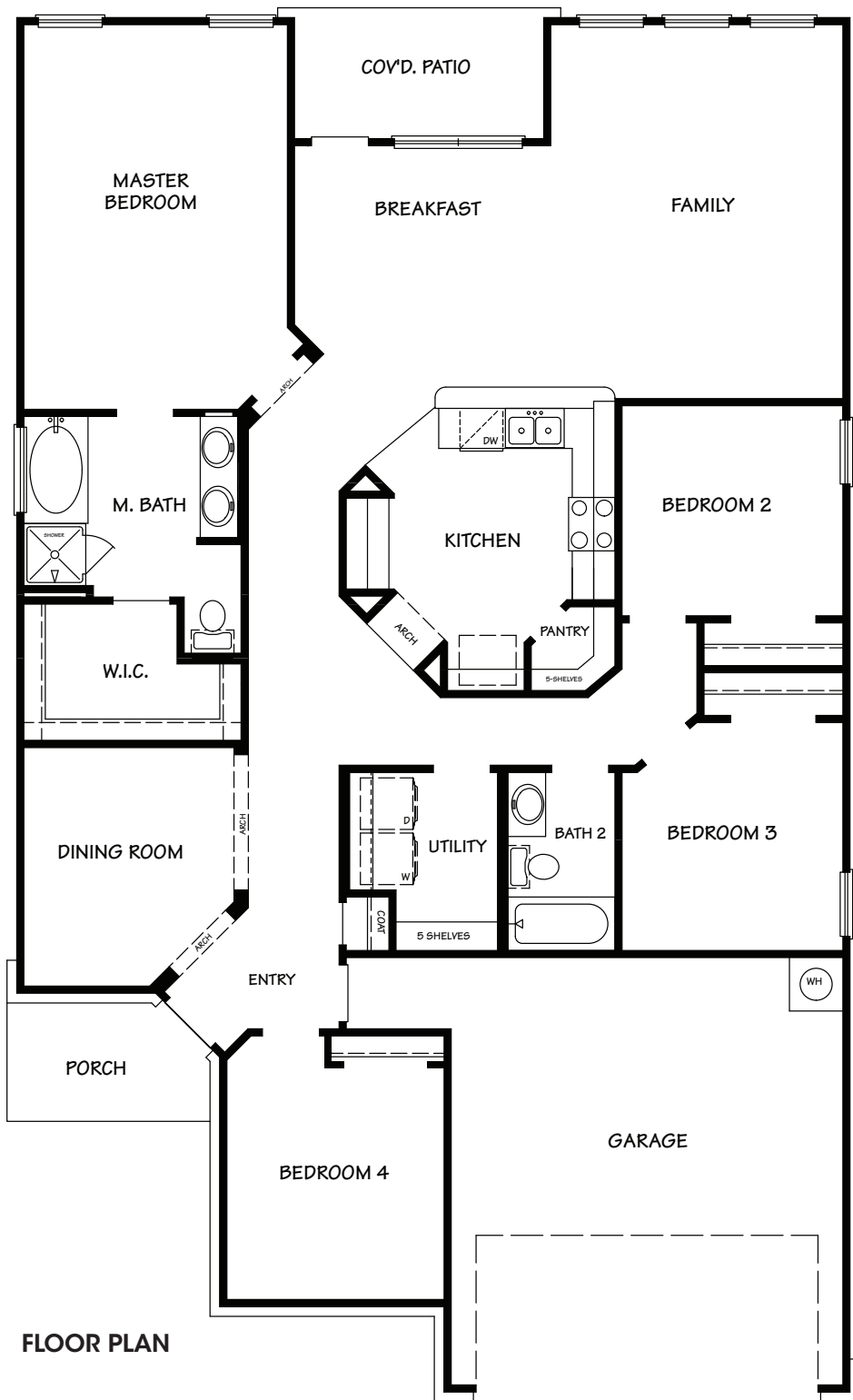
C.



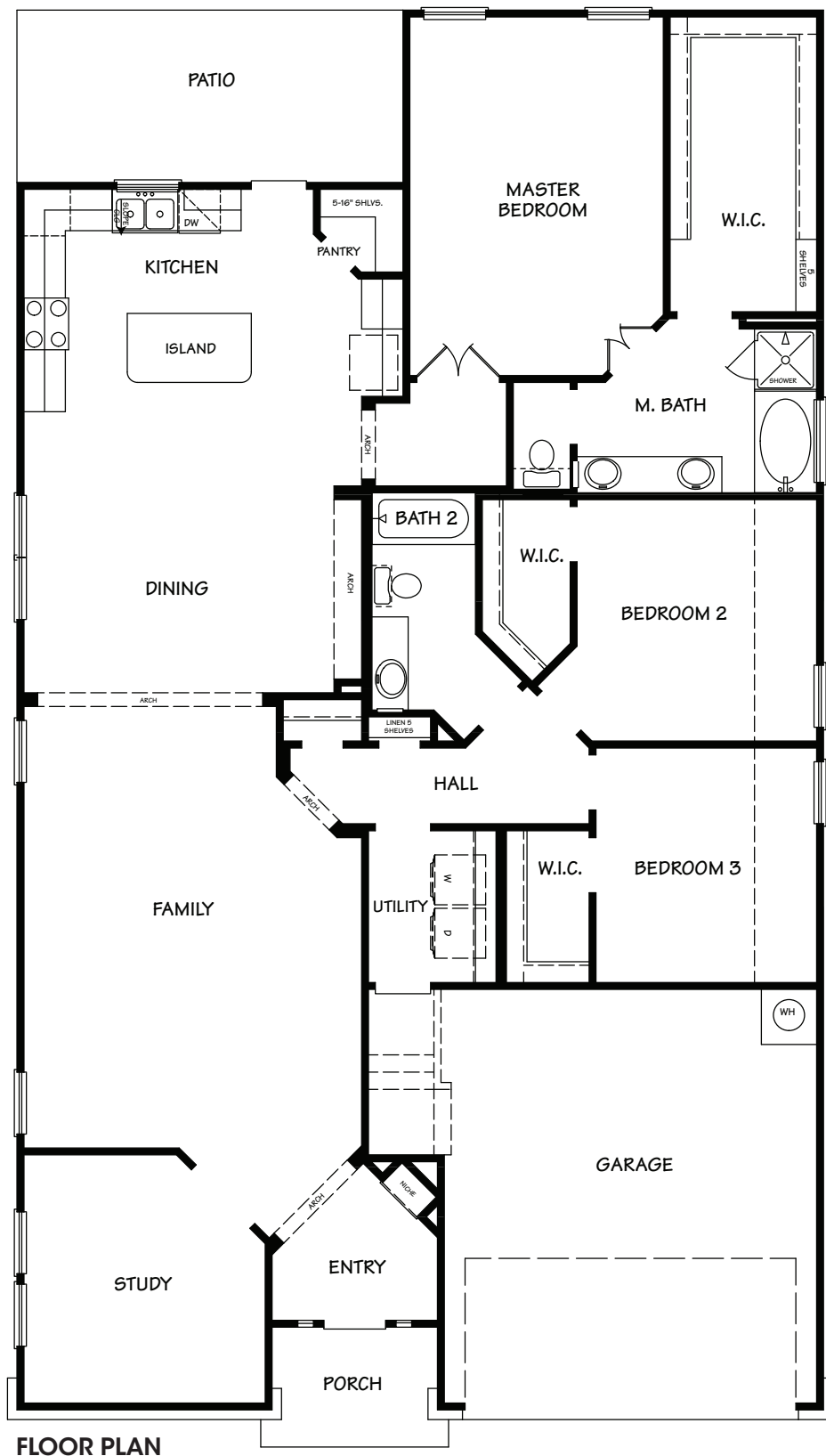


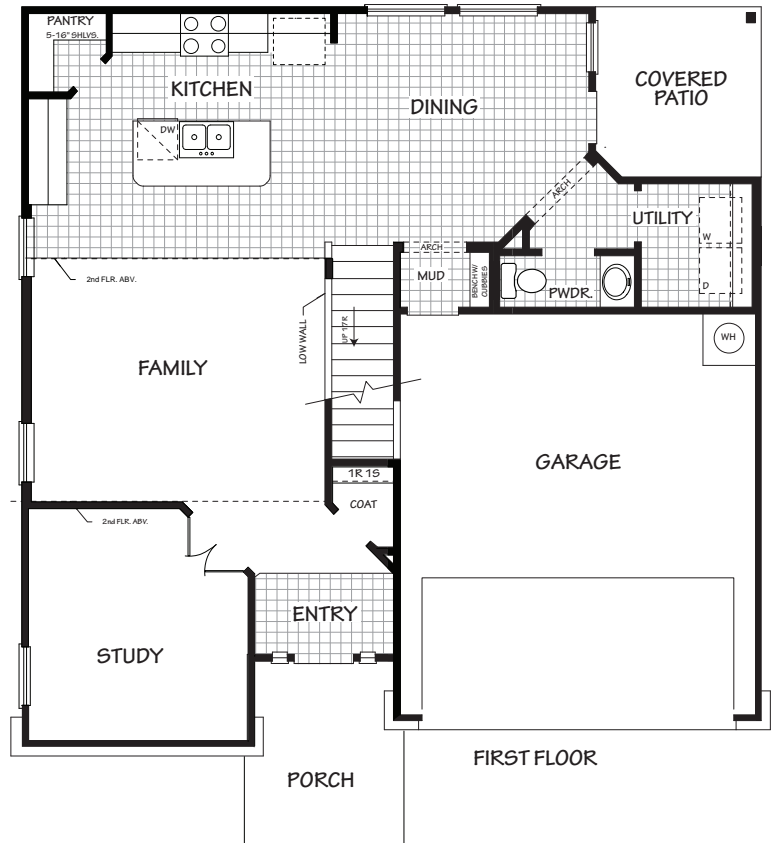




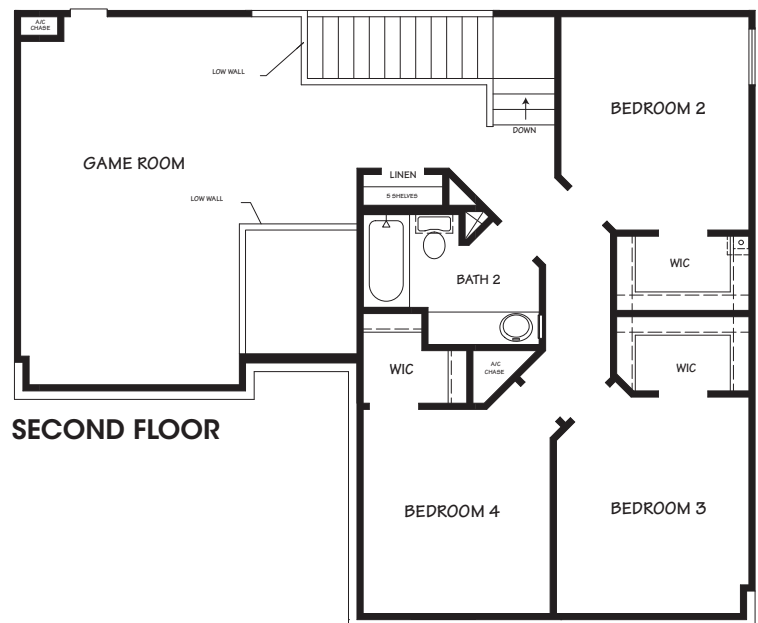
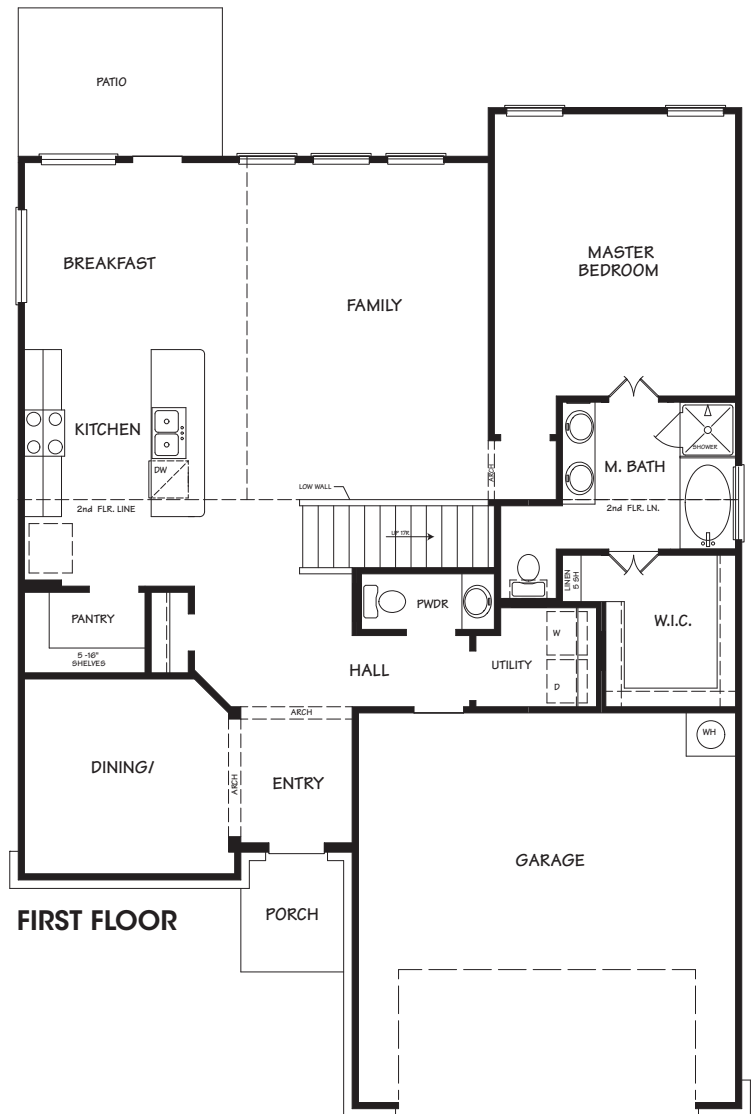


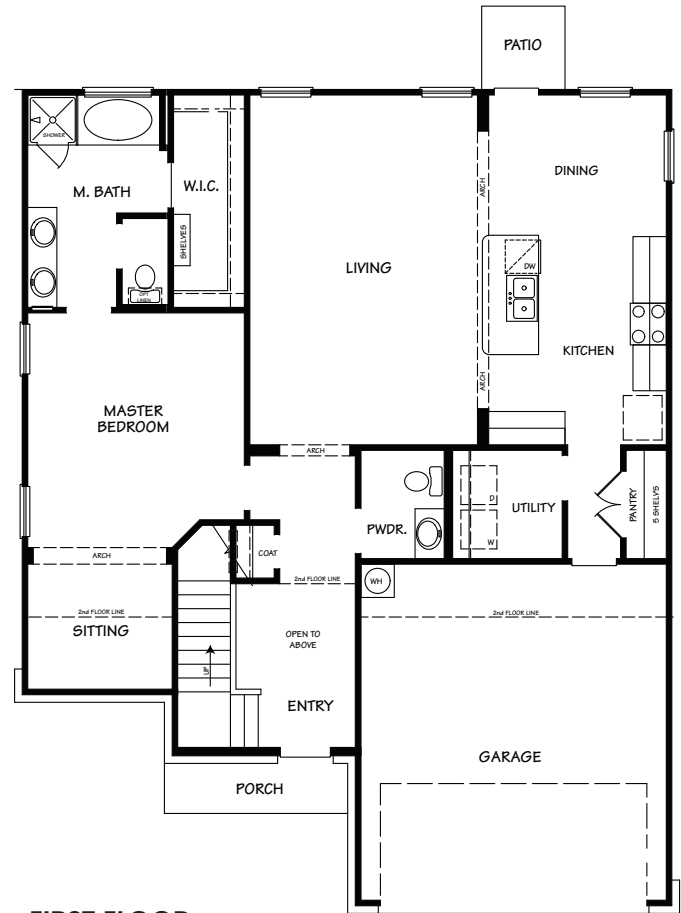




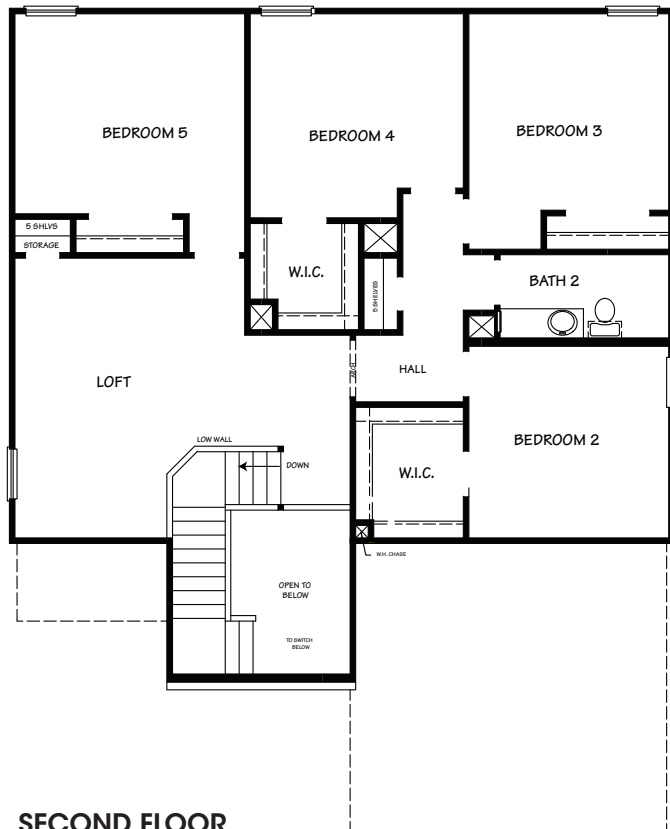


SECOND FLOOR

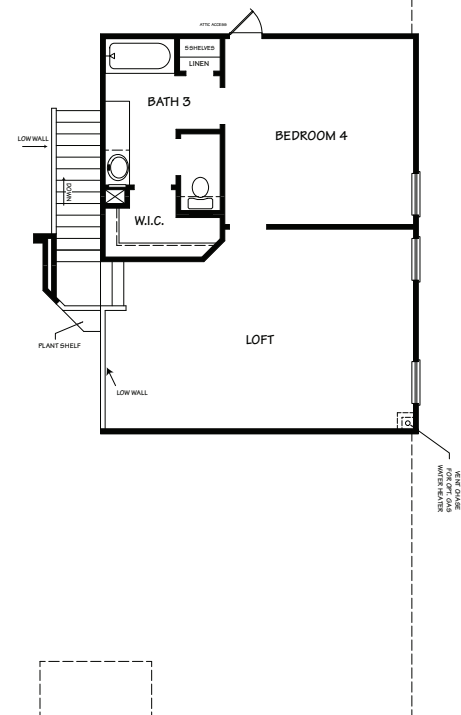
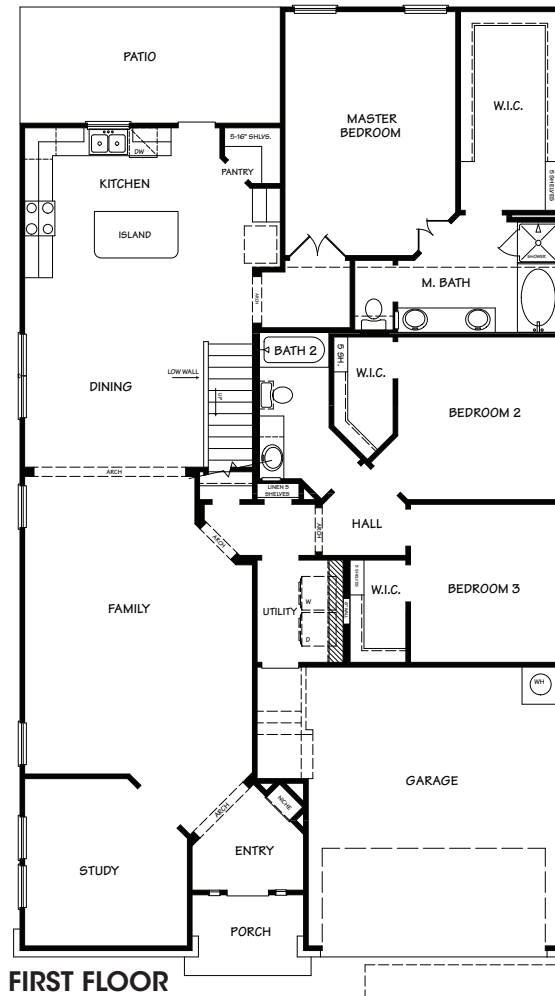




**FIRST FLOOR**









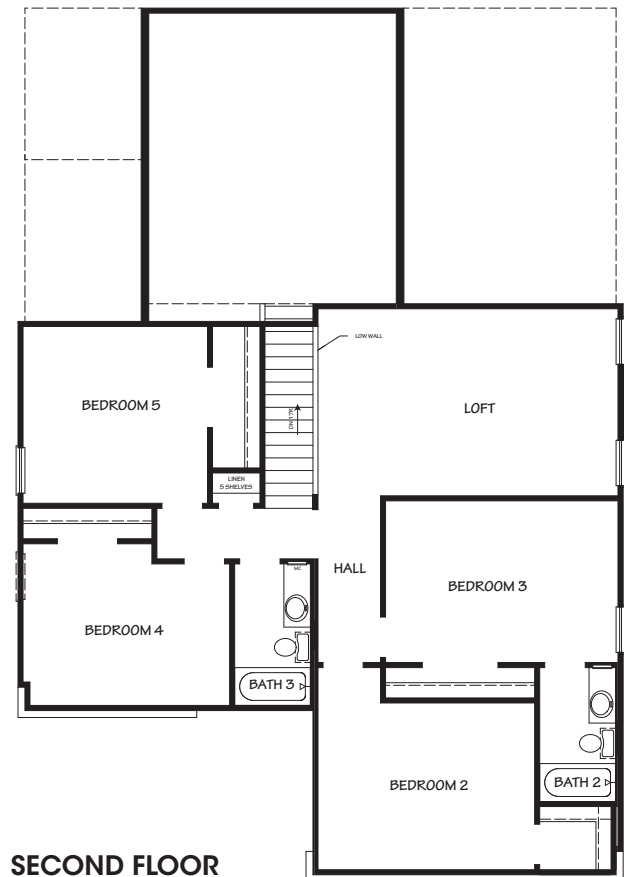
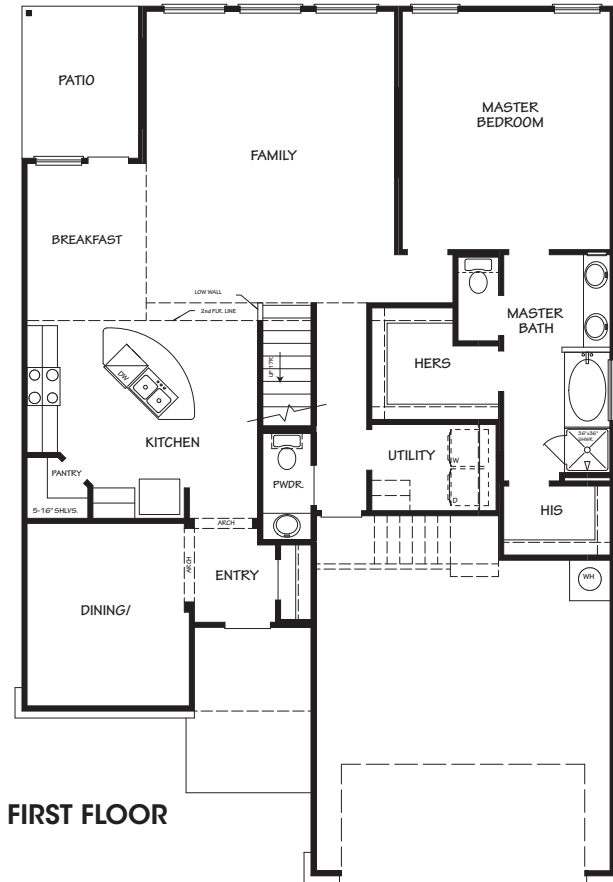
A.

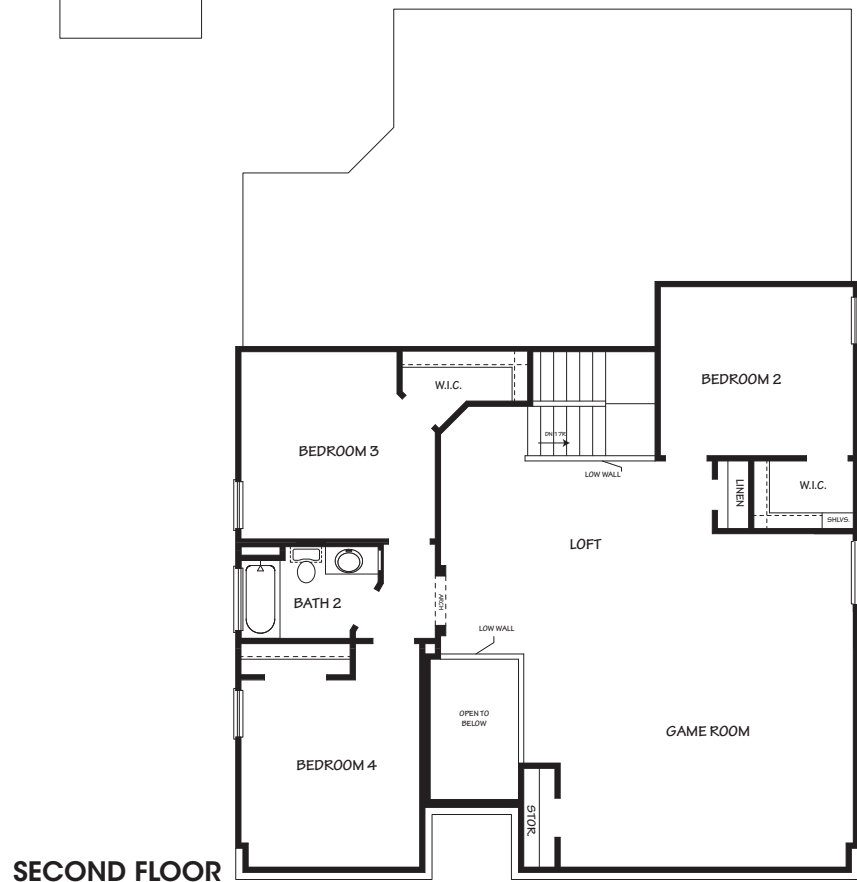
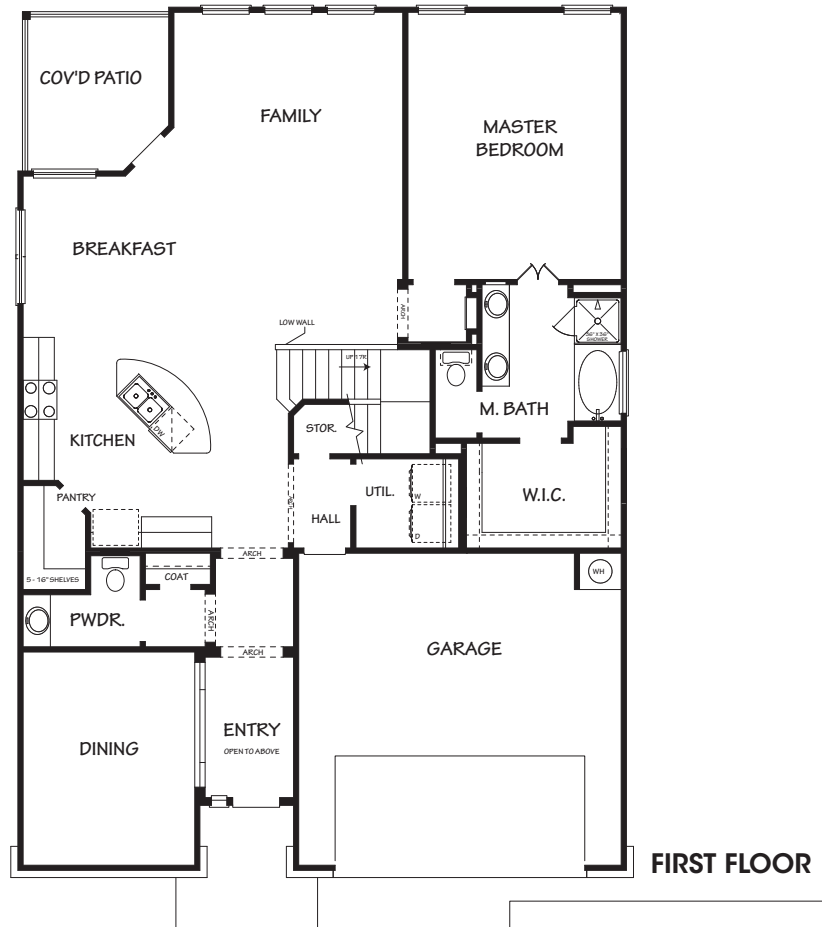


B.



C.





---

# REMUDA RANCH

---

From 1604 : Remuda Ranch is 3 miles outside loop 1604 from Cuelbra/471.  
Turn right on Galm road travel for about ¼ of a mile and the community is on  
the left side.

From 1560 and Braun Rd : Turn right on Galm road travel for 3 miles passed the  
government canyon, Remuda Ranch will be on the Right hand side.

**13302 Pecos Parke, San Antonio, TX 78253**



visit us online at [drhorton.com](http://drhorton.com)